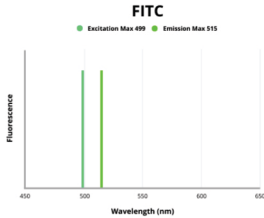


## Rabbit Anti-IgG Fab Fragment Antibody (FITC)

Catalogue No.:BTA11012



Fluorescence emission spectra of FITC.

Rabbit Anti-IgG Fab fragment Antibody (FITC) is a Rabbit Polyclonal antibody against IgG Fab fragment conjugated to FITC.

**Target:** IgG Fab Fragment

**Clonality:** Polyclonal

**Reactivity:** Goat

**Tested Applications:** ELISA

**Host:** Rabbit

**Recommended dilutions:** Optimal dilutions/concentrations should be determined by the end user.

**Conjugation:** FITC

**Excitation/Emission:** 499/515

**Laser Line:** 488

**Isotype:** IgG

**Form:** Liquid

**Purification:** Purified using the caprylic acid ammonium sulfate (CA-AS) precipitation method.

**Storage:** Aliquot and store at -20°C. Avoid exposure to light. Avoid repeated freeze/thaw cycles.

**Buffer:** 0.01 M PBS, pH 7.4, 0.03% Proclin-300 and 50% glycerol.

**Note:** This product is for research use only.