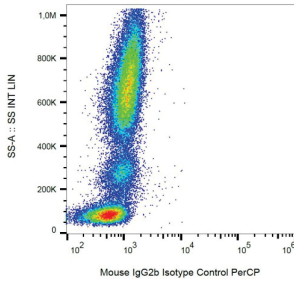
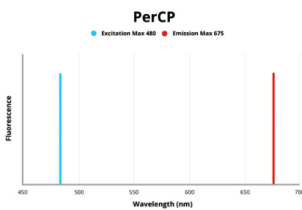


Mouse IgG2b Isotype Control (PerCP)

Catalogue No.:BTA14489



Example of nonspecific mouse IgG2b PerCP signal on human peripheral blood; surface staining, 8 µg/ml.



Fluorescence emission spectra of PerCP.

Mouse IgG2b Isotype Control is an Isotype Control conjugated to PerCP.

Target: Mouse IgG2b

Clonality: Monoclonal

Clone: C857

Tested Applications: FCM

Host: Mouse

Recommended dilutions: Optimal dilutions/concentrations should be determined by the end user.

Conjugation: PerCP

Excitation/Emission: 480/675

Laser Line: 488

Immunogen: KLH-coupled trinitrophenol.

Isotype: IgG_{2b} Kappa

Datasheet

Revision date: 30 Jul
2024

Storage:	Store in the dark at 2-8°C. Avoid exposure to light. Do not freeze.
Buffer:	PBS, pH 7.4, containing 15 mM sodium azide.
Specificity:	Reacts with an epitope irrelevant for a variety of resting, activated, live, and fixed human, mouse, and rat tissues.
Concentration:	0.1 mg/ml
Note:	This product is for research use only.
Directions for use:	This product is intended as an isotype control to establish the amount of non-specific antibody binding. Use the same concentration of this control antibody as the recommended working concentration of the antigen-specific antibody. When working with prediluted antibodies, dilute the isotype control to the same concentration as is the concentration of the antigen-specific antibody in the prediluted antibody solution you are using. If under particular experimental conditions the background signal of the isotype control is too high (usually when working concentrations of used antibodies are above 10 µg/ml of incubation mixture), change the conditions of the experiment to reduce the background.

BIOTECH ASSAY