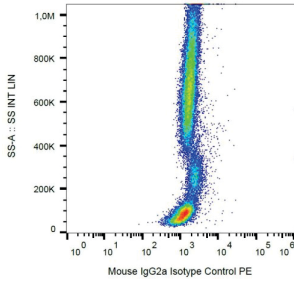


Datasheet

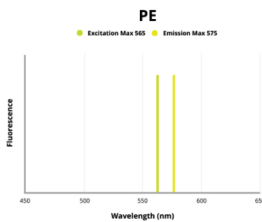
Revision date: 09 Oct 2024

Mouse IgG2a Isotype Control (PE)

Catalogue No.:BTA14476



Example of nonspecific mouse IgG2a PE signal on human peripheral blood; surface staining, 9 µg/ml.



Fluorescence emission spectra of PE.

Mouse IgG2a Isotype Control is an Isotype Control conjugated to PE.

Target: Mouse IgG2a

Clonality: Monoclonal

Clone: F608

Tested Applications: FCM

Host: Mouse

Recommended dilutions: Optimal dilutions/concentrations should be determined by the end user.

Conjugation: PE

Excitation/Emission: 565/575

Laser Line: 550

Immunogen: The transplantable plasmacytoma MOPC-173 was induced by intraperitoneal injection of mineral oils into BALB/c mice.

Isotype: IgG_{2a} Kappa

Datasheet

Revision date: 09 Oct
2024

Storage:	Store in the dark at 2-8°C. Avoid exposure to light. Do not freeze.
Buffer:	Stabilizing PBS solution containing 15 mM sodium azide.
Specificity:	This mouse IgG2a monoclonal antibody reacts with an unknown epitope. It does not react with a variety of resting, activated, live, and fixed mouse, rat and human tissues.
Concentration:	0.1 mg/ml
Note:	This product is for research use only.

BIOTECH ASSAY