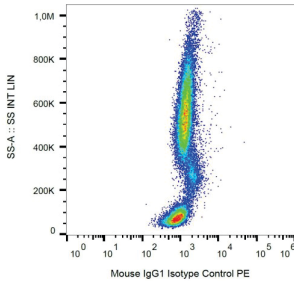


Datasheet

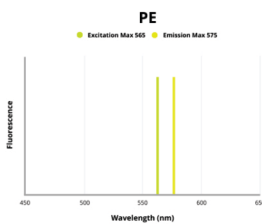
Revision date: 09 Oct 2024

Mouse IgG1 Isotype Control (PE)

Catalogue No.:BTA14481



Example of nonspecific mouse IgG1 PE signal on human peripheral blood; surface staining, 9 µg/ml.



Fluorescence emission spectra of PE.

Mouse IgG1 Isotype Control is an Isotype Control conjugated to PE.

Target: Mouse IgG1

Clonality: Monoclonal

Clone: R828

Tested Applications: FCM

Host: Mouse

Recommended dilutions: Optimal dilutions/concentrations should be determined by the end user.

Conjugation: PE

Excitation/Emission: 565/575

Laser Line: 550

Isotype: IgG₁ Kappa

Storage: Store in the dark at 2-8°C. Avoid exposure to light. Do not freeze.

Datasheet

Revision date: 09 Oct
2024

Buffer:	Stabilizing PBS solution containing 15 mM sodium azide.
Specificity:	This mouse IgG1 kappa monoclonal antibody has unknown specificity and was chosen as an isotype control after screening on variety of resting, activated, live and fixed rat and human tissues.
Concentration:	0.1 mg/ml
Note:	This product is for research use only.

BIOTECH ASSAY