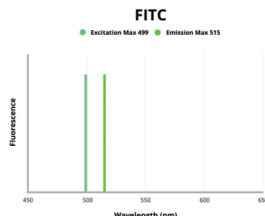


Mouse IgG1 Isotype Control (FITC)

Catalogue No.:BTA14480



Fluorescence emission spectra of FITC.

Mouse IgG1 Isotype Control is an Isotype Control conjugated to FITC.

Target: Mouse IgG1

Clonality: Monoclonal

Clone: R828

Tested Applications: FCM

Host: Mouse

Recommended dilutions: Optimal dilutions/concentrations should be determined by the end user.

Conjugation: FITC

Excitation/Emission: 499/515

Laser Line: 488

Isotype: IgG₁ Kappa

Storage: Store in the dark at 2-8°C. Avoid exposure to light. Do not freeze.

Buffer: PBS solution with 15 mM sodium azide.

Specificity: This mouse IgG1 kappa monoclonal antibody has unknown specificity and was chosen as an isotype control after screening on variety of resting, activated, live and fixed rat and human tissues.

Concentration: 1 mg/ml

Note: This product is for research use only.