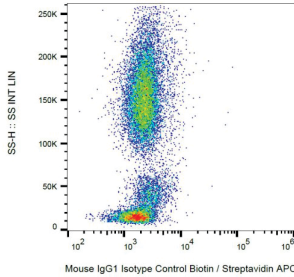


Datasheet

Revision date: 16 Jun
2024

Mouse IgG1 Isotype Control (Biotin)

Catalogue No.:BTA14479



Example of nonspecific mouse IgG1 biotin signal on human peripheral blood; surface staining, 6 µg/ml.

Mouse IgG1 Isotype Control is an Isotype Control conjugated to Biotin.

Target: Mouse IgG1

Clonality: Monoclonal

Clone: R828

Tested Applications: ELISA, WB, IHC, IF/ICC, FCM, IP

Host: Mouse

Recommended dilutions: Optimal dilutions/concentrations should be determined by the end user.

Conjugation: Biotin

Isotype: IgG, Kappa

Storage: Store at 2-8°C. Do not freeze.

Buffer: PBS solution with 15 mM sodium azide.

Specificity: This mouse IgG1 kappa monoclonal antibody has unknown specificity and was chosen as an isotype control after screening on variety of resting, activated, live and fixed rat and human tissues.

Concentration: 1 mg/ml

Note: This product is for research use only.