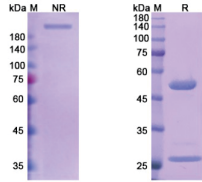


Datasheet

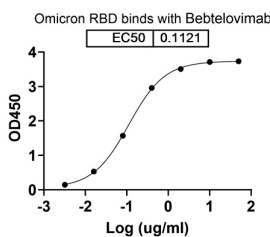
Revision date: 08 Oct 2024

Bebtelovimab

Catalogue No.:BTA14504



SDS-PAGE analysis of Bebtelovimab.



Bioactivity of Bebtelovimab.

This product is for research use only (RUO) by laboratories. It is not suitable for use in humans or as a medicine.

Severe Acute Respiratory Syndrome Coronavirus 2 (SARS-CoV-2/COVID-19) Spike Protein RBD Neutralizing Antibody (Bebtelovimab) is a research grade Human Monoclonal Antibody biosimilar for the detection of SARS-CoV-2/COVID-19 Spike Protein.

The SARS-CoV-2 Spike Protein (S protein) is a viral protein that allows the entry of SARS-CoV-2 into human cells. The protein forms trimers on the viral capsid and binds to human Angiotensin Converting Enzyme 2 (ACE2) located on the cell surface. The protein has a cleavage site between the S1 and S2 subunits that is targeted by the human enzyme Furin, and it may also cause the development of a syncytium (cell fusion). Antibodies to S protein can prevent viral entry as well as target the virus for further immune action.

Target: SARS-CoV-2 Spike Protein

Clonality: Monoclonal

Reactivity: Virus

Host: Human

Recommended dilutions: Optimal dilutions/concentrations should be determined by the end user.

Conjugation: Unconjugated

Datasheet

Revision date: 08 Oct
2024



BIOTECH ASSAY Inc.

Isotype:	IgG ₁ Lambda
Form:	Liquid
Purity:	> 95%
Purification:	Purified by Protein A or G.
Storage:	Aliquot and store at -20 °C. Avoid repeated freeze/thaw cycles.
Buffer:	PBS, pH 7.4.
Concentration:	1.93 mg/ml
Note:	This product is for research use only.
Directions for use:	Centrifuge before opening to ensure complete recovery of vial contents.

BIOTECH ASSAY